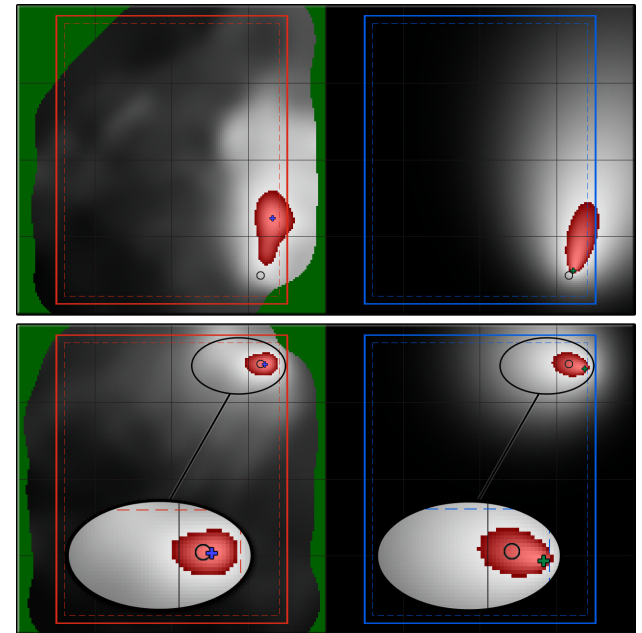


Model-based Shape Analysis of Gas Concentration Gridmaps for Improved Gas Source Localisation

Achim Lilienthal, Felix Streichert, and Andreas Zell
WSI, University of Tübingen, GERMANY

- A method to post-process gas concentration gridmaps is introduced.
- Analysis of the average gas distribution is performed by fitting a model from physics.
- The best fit provides an alternative estimate of the location of the gas source.
- Allows to distinguish different airflow conditions.
- Up to 32% improvement of the localisation accuracy with estimate selection strategies.



Gas source location estimate in concentration gridmaps and the corresponding best fit models.